

ZONE3®

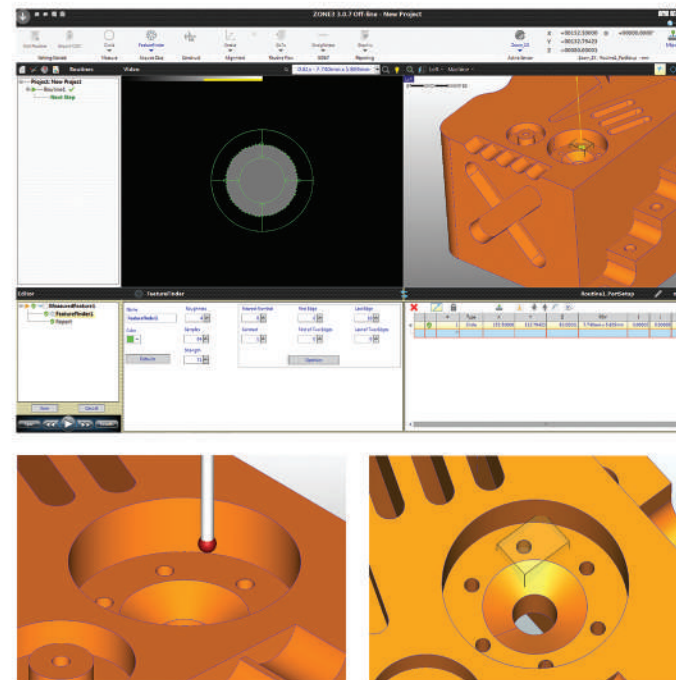
3D Multisensor Software

ZONE3® metrology software puts the power of OGP's 30 years of multisensor experience into your measurement system for faster, easier and more productive measurements than ever before.

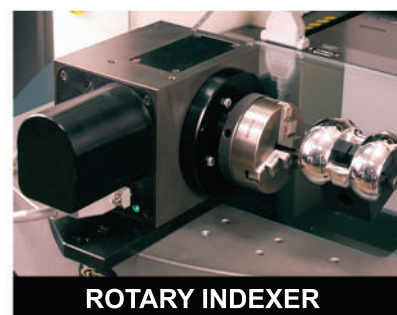
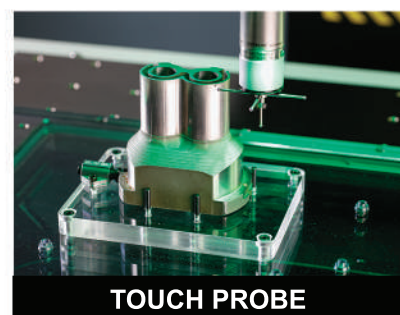
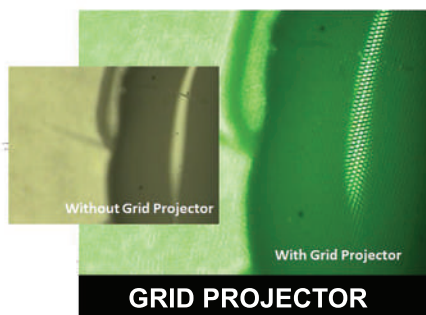
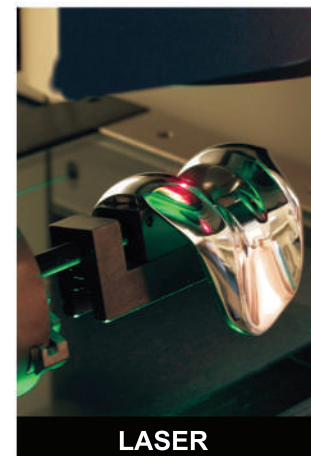
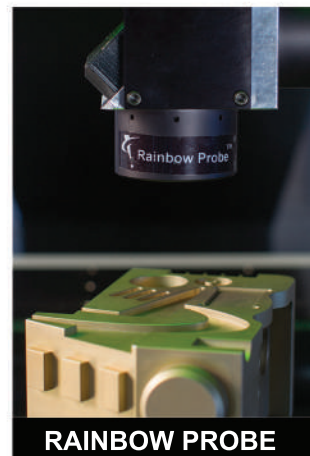
Fast - Full field image processing and high-speed cameras allow entire scenes to be measured instantly.

Capable - Full multisensor capability, including scanning laser and scanning probe support, GD&T and custom scripting.

Easy - Alignments, measurements and constructions are shown graphically in real time, regardless of which member of the ZONE3 family you use – Express, Prime, Pro or Offline.



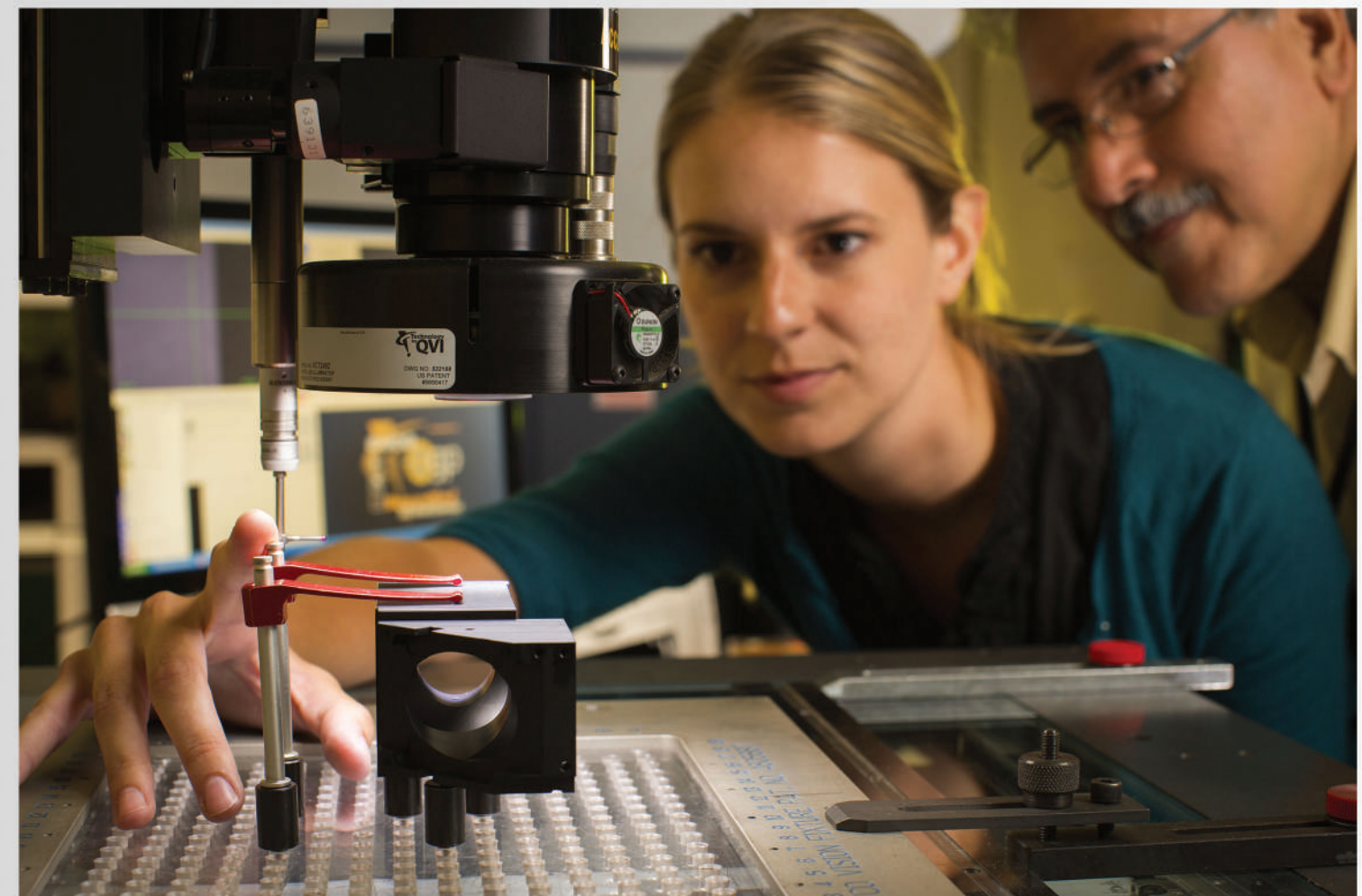
HARDWARE ACCESSORIES



Confidence. When Results Matters.™

SMARTSCOPE® ZIP Series

Multisensor Measurement for Manufacturing Professionals



ABOUT SMARTSCOPE® ZIP SERIES

SmartScope ZIP® systems provide capable, field-tested automatic dimensional measurement, making them worldwide favorites in the industrial marketplace. Whether using high-speed video to measure edges, or multisensor technology to measure complex surface profiles, SmartScope ZIP is up to the task. SmartScope ZIP is available in a range of sizes and measurement volumes - from compact benchtops to expansive floor models - so there is sure to be a ZIP to fit your specific measurement needs.

SmartScope® ZIP 250

The Industry Standard for
Benchtop Video Metrology



SmartScope® ZIP 450

Heavy-Duty Multisensor
Measuring System



SmartScope® ZIP 300

High Accuracy Multisensor
Metrology System



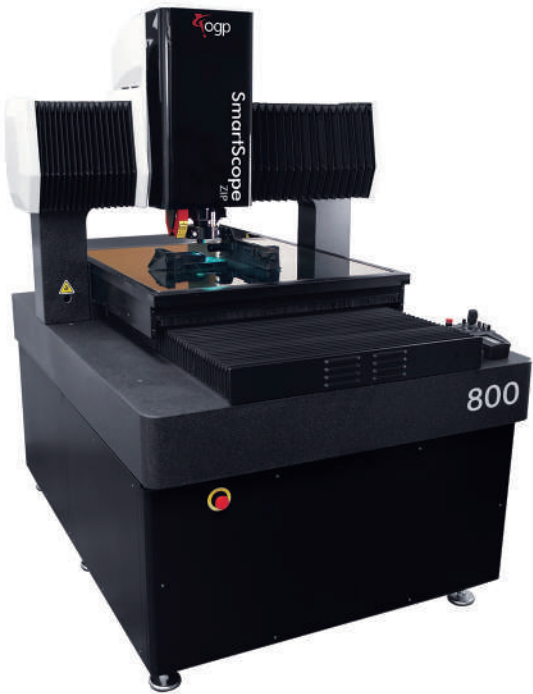
SmartScope® ZIP 635

High Speed Multisensor
Measuring System for Large Parts



SmartScope® ZIP 800

Large Travel Multisensor
Measuring System



SMARTSCOPE ZIP SERIES SPECIFICATION:					
Model ZIP	XYZ Travel (mm)	XYZ Scale Resolution (µm)	Payload (kg)	Sensor Options	Optional
250	250 X 150 X 200	0.1µm	25	Tactile: TP20 or TP200 Touch Probe, SP25 Scanning Probe, Feather Probe Non-Contact: DRS™ laser, TTL laser, Rainbow Probe™, TeleStar Probe	Black & White camera, MSR, MTR Rotary Indexer, LED/FO Focus Grid Projector, Laser Pointer, Replacement Lenses, Lens Attachments, Adapter Tubes (Factory Installed) Ext. X axis - 300mm 0.05µm, with dual X axis scales
300	300 X 300 X 200		30		Black & White camera, MSR, MTR, HDR, HPR, Dual Rotary Indexer (requires 300mm Z axis), LED/FO Focus Grid Projector, Laser Pointer, Replacement Lenses, Lens Attachments, Adapter Tubes (Factory installed) Ext. Z axis - 300mm, 0.05µm XYZ scales
450	450 X 450 X 200		75		Black & White camera, MSR, MTR, HDR, HPR, Dual Rotary Indexer (requires 300mm Z axis), LED/FO Focus Grid Projector, Laser Pointer, Replacement Lenses, Lens Attachments, Adapter Tubes (Factory installed) Ext. Y axis - 610mm, Ext. Z axis - 300mm, 0.05µm XYZ scales
635	635 X 635 X 200		50		Black & White camera, MSR, MTR Rotary Indexer, LED/FO Focus Grid Projector, Laser Pointer, Replacement Lenses, Lens Attachments, Adapter Tubes (Factory installed)
800	800 X 820 X 200		75		Black & White camera, MSR, MTR, HDR, HPR, Dual Rotary Indexer (requires 300mm Z axis) LED/FO Focus Grid Projector, Laser Pointer, Replacement Lenses, Lens Attachments, Adapter Tubes (Factory installed) Ext. Z axis - 300mm, 0.05µm XYZ scales