

# ZONE3®

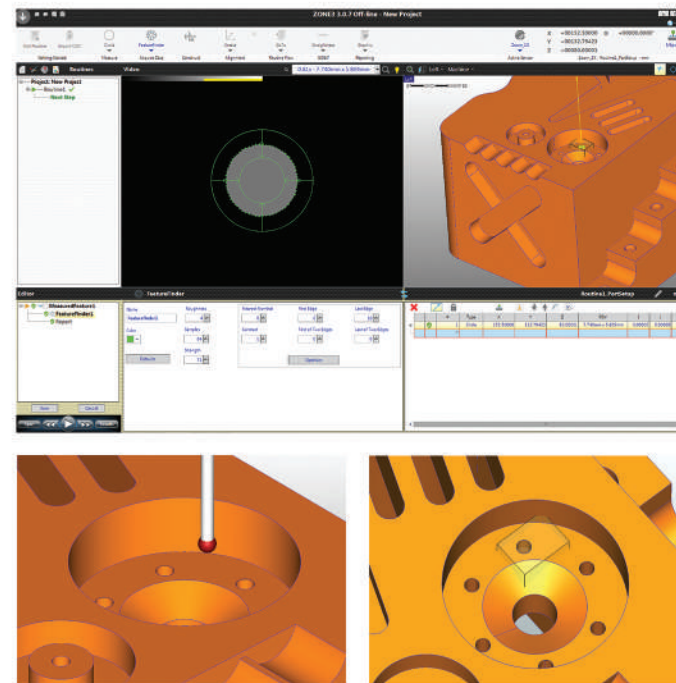
3D Multisensor Software

ZONE3® metrology software puts the power of OGP's 30 years of multisensor experience into your measurement system for faster, easier and more productive measurements than ever before.

**Fast** - Full field image processing and high-speed cameras allow entire scenes to be measured instantly.

**Capable** - Full multisensor capability, including scanning laser and scanning probe support, GD&T and custom scripting.

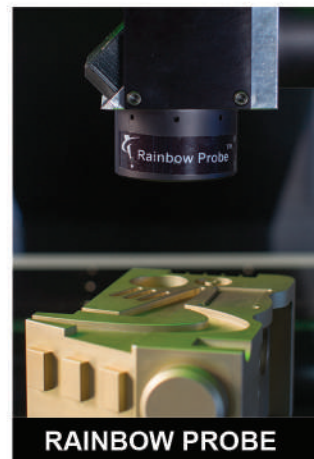
**Easy** - Alignments, measurements and constructions are shown graphically in real time, regardless of which member of the ZONE3 family you use – Express, Prime, Pro or Offline.



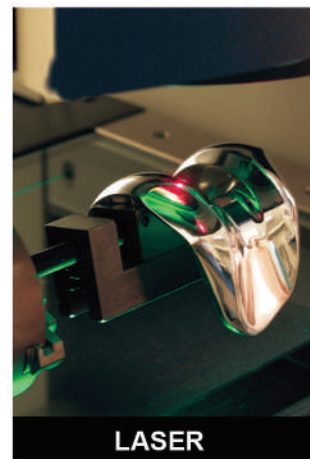
## HARDWARE ACCESSORIES



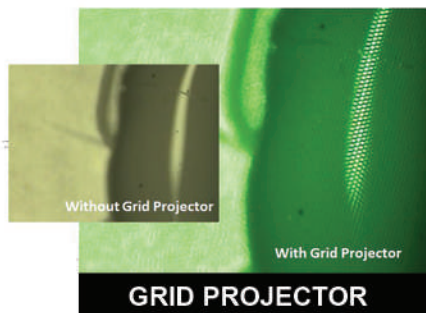
FEATHER PROBE



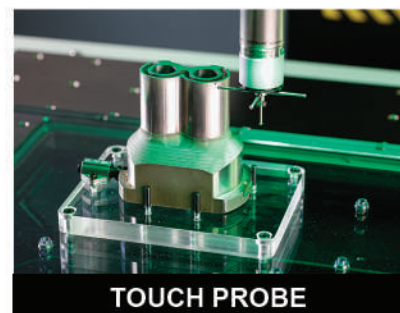
RAINBOW PROBE



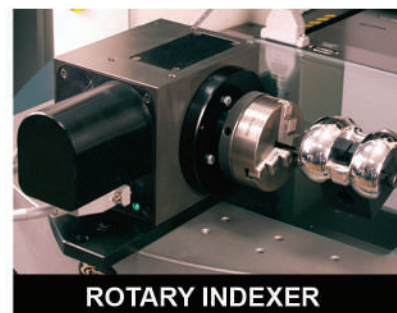
LASER



GRID PROJECTOR



TOUCH PROBE



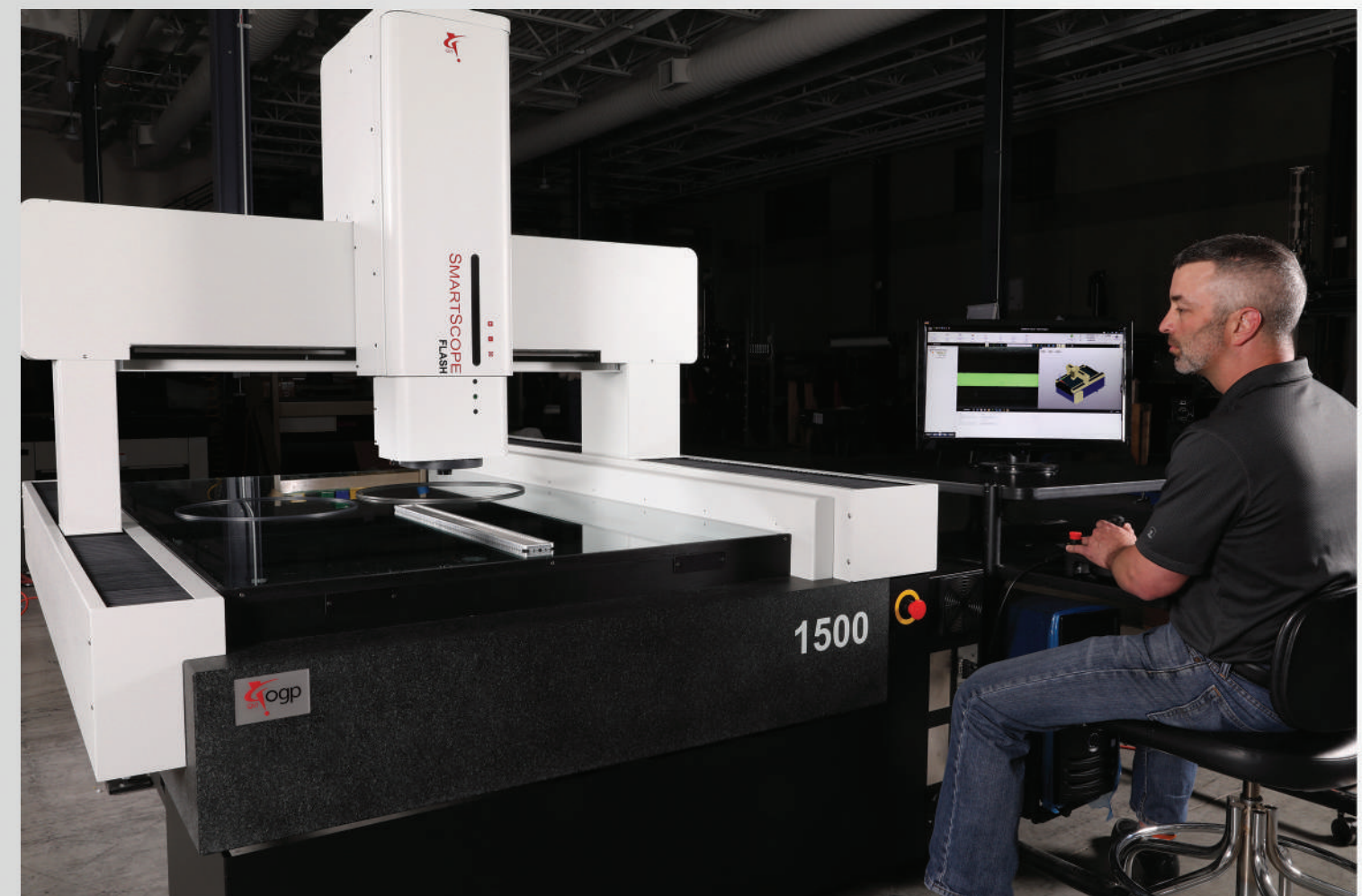
ROTARY INDEXER



Confidence. When Results Matters.™

## SMARTSCOPE® Flash CNC Series

Multisensor Measurement for Manufacturing Professionals



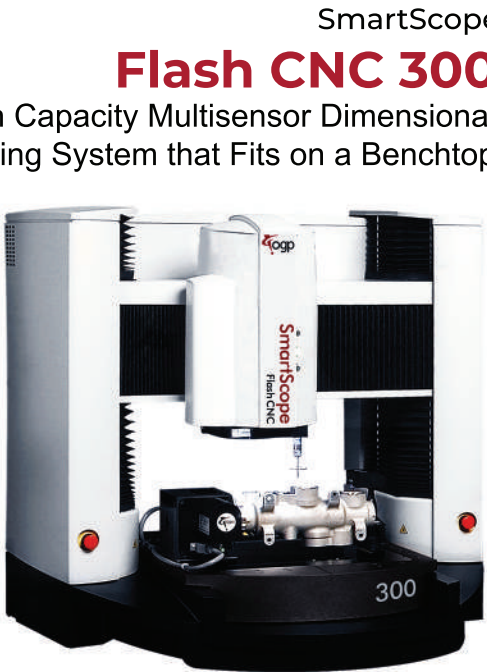


# ABOUT SMARTSCOPE® FLASH CNC & CNC SERIES

SmartScope® CNC/Flash CNC™ systems provide intuitive, inclusive automatic dimensional measurement that frees you to focus on other tasks. Whether using high-speed video to measure edges, or multisensor technology to measure complex surface profiles, SmartScope CNC/Flash CNC can handle your toughest measurement tasks. CNC/Flash CNC is an all-in-one measurement solution that can help you verify dimensions, qualify parts and processes, remove bottlenecks, reduce costs, and make you more productive.



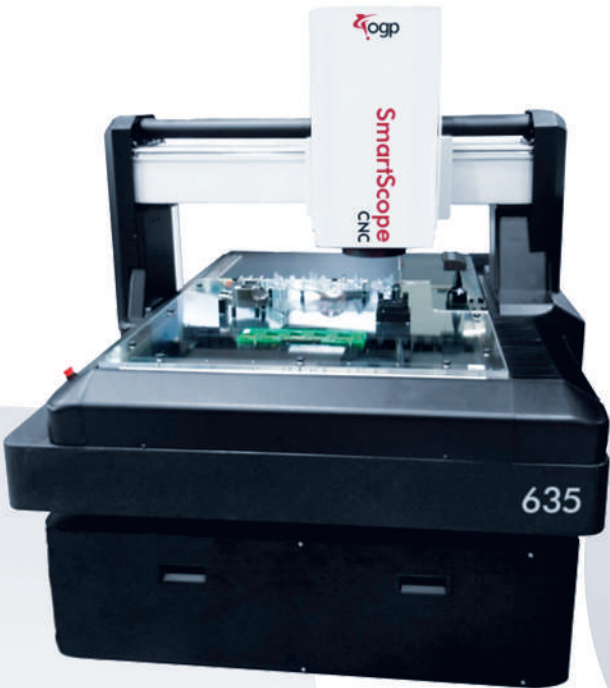
SmartScope®  
**Flash CNC 200**  
Multisensor Dimensional Measuring System that Fits on a Benchtop



SmartScope®  
**Flash CNC 300**  
High Capacity Multisensor Dimensional Measuring System that Fits on a Benchtop

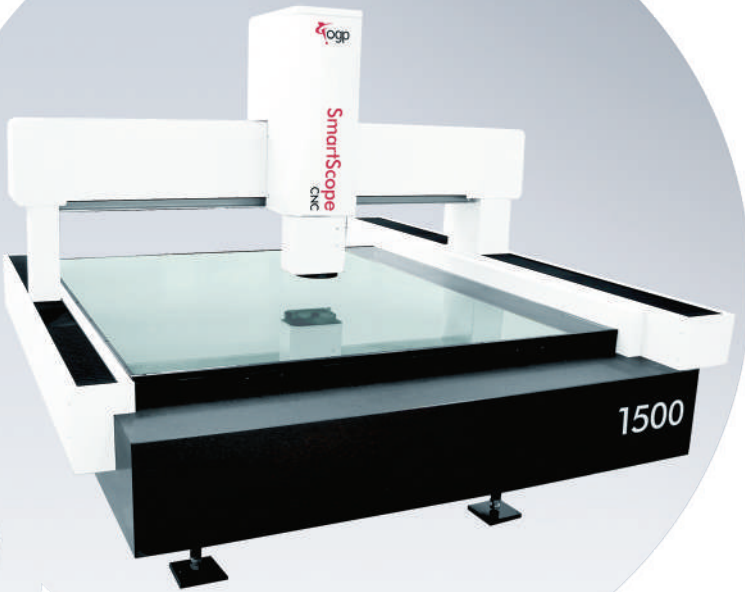


SmartScope®  
**CNC 500**  
Large Capacity Multisensor Dimensional Measuring System



SmartScope®  
**CNC 635**  
High Speed Multisensor Dimensional Measuring System for Large Parts

SmartScope®  
**CNC 1500/1550/1552**  
Large XY-Travel Multisensor Dimensional Measuring System



SmartScope®  
**CNC 670**  
Extra-Large Capacity Multisensor Dimensional Measuring System

## SMARTSCOPE FLASH CNC & CNC SERIES SPECIFICATION:

Model Flash CNC & CNC	XYZ Travel (mm)	XYZ Scale Resolution (µm)	Payload (kg)	Sensor Options	Optional
200	200 X 200 X 150	0.1µm, with dual Z-axis scales	16	<b>Tactile:</b> TP20 or TP200 Touch Probe, Feather Probe™  <b>Non-contact:</b> TTL Laser	Black & White camera, MSR Rotary Indexer, Focus Grid Projector, Laser Pointer, Replacement Lenses, Lens Attachments
300	300 X 300 X 250		30	<b>Tactile:</b> TP20 or TP200 Touch Probe, SP25 Scanning Probe, Feather Probe  <b>Non-contact:</b> TTL Laser	Black & White camera, MSR, MTR Rotary Indexer, Focus Grid Projector, Laser Pointer, Replacement Lenses, Lens Attachments
500	500 X 450 X 200	0.1µm	65	<b>Tactile:</b> TP20 or TP200 Touch Probe, SP25 Scanning Probe, Feather Probe  <b>Non-contact:</b> TTL Laser, DRS Laser, Rainbow Probe	Black & White camera, MSR, MTR, Focus Grid Projector, Laser Pointer, Replacement Lenses, Lens Attachments, Ext. Y axis - 610mm, Ext. Z axis - 300mm
635	635 X 635 X 200		50		Black & White camera, MSR, MTR Rotary Indexer, Focus Grid Projector, Laser Pointer, Replacement Lenses, Lens Attachments
670	650 X 660 X 200	130	Black & White camera, MSR, MTR, HDR, HPR, Dual Rotary Indexer, Focus Grid Projector, Laser Pointer, Replacement Lenses, Lens Attachments, Ext. Y axis - up to 1500mm, Ext. Z axis - 300mm Ext. Z axis - 400mm		
1500	900 X 1500 X 200	0.1µm, with dual Y-axis scales	100	<b>Tactile:</b> TP20 or TP200 Touch Probe	Black & White camera, MSR, MTR Rotary Indexer, Focus Grid Projector, Laser Pointer, Replacement Lenses, Lens Attachments
1550	1240 X 1500 X 200			<b>Non-contact:</b> TTL Laser, DRS™ Laser	Black & White camera, MSR, MTR Rotary Indexer, Focus Grid Projector, Laser Pointer, Replacement Lenses, Lens Attachments
1552	1500 X 1500 X 200				Black & White camera, MSR, MTR Rotary Indexer, Focus Grid Projector, Laser Pointer, Replacement Lenses, Lens Attachments, Ext. Y axis - up to 2000mm